

TurboVap® LV Multi Rack for 75 to 165 mm Tubes

User Instructions

Thank you for your purchase of one of the following products.

Part Number	Description
414964	TurboVap LV Multi Rack, 48 Positions, 10–20 mm (OD), 75–165 mm (length) Tubes
415129	TurboVap LV Multi Rack, 24 Positions, 21–30 mm (OD), 75–165 mm (length) Tubes

The new TurboVap® LV Multi Rack series is highly adaptable for your laboratories' changing needs. Due to the height adjustment bars with handles and the vial spring system, the multi racks are capable of accommodating many different tubes and vials both in terms of length and diameter.

Adjust the Multi Rack

In order to use your new TurboVap® LV Multi Rack with your TurboVap LV system, you need to set it up for the tube/vial type that you wish to use.

1. Select the tube/vial type you wish to use and note its length.
2. Set the height adjustment bars to correspond with the length of your tubes/vials using the adjustment handles on both ends of each row.

Note: There is a 2.5 mm unit graduated scale on both sides of the rack to help you with the height adjustment.

If you are changing tube/vial size to a shorter one, slide the adjustment handles upwards together to the appropriate position for your tubes/vials.

If you are changing tube/vial size to a longer one, gently squeeze the adjustment handles and slide them downwards together to the appropriate position for your tubes/vials.

The multi rack is now ready for use on your TurboVap LV system.

Note: The front of the multi rack is indicated by an etching saying FRONT on the top surface.

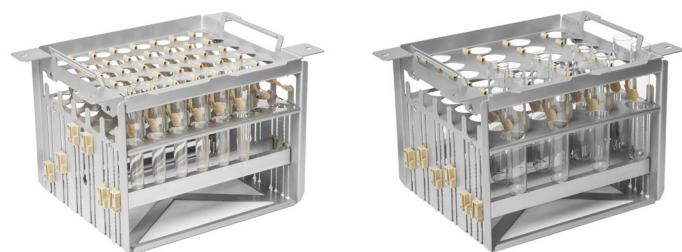


Figure 1. Left: TurboVap® LV Multi Rack with 48 positions for test tubes with 10-20 mm outer diameter and 75–165 mm length (P/N 414964). Right: TurboVap® LV Multi Rack with 24 positions for test tubes with 21–30 mm outer diameter and 75–165 mm length.

Common Test Tubes and Vials and Rack Compatibility Matrix

Part Number	Description	TurboVap® LV Multi Rack
C48985	10 x 75 mm Test Tubes	414964
C44651	12 x 75 mm Test Tubes	414964 or 415129
C40707	13 x 100 mm Test Tubes	414964 or 415129
413282	16 x 75 mm Test Tubes	414964 or 415129
C40708	16 x 100 mm Test Tubes	414964 or 415129
C45273	16 x 125 mm Test Tubes	414964 or 415129
414574	18 x 75 mm Test Tubes	414964 or 415129
N/A	18 x 150 mm Test Tubes	414964 or 415129
C40709	20 x 150 mm Test Tubes	414964 or 415129
N/A	25 x 150 mm Test Tubes	415129
C47811	10 mL Conical Centrifuge Test Tubes	414964 or 415129
C44941	15 mL Conical Centrifuge Test Tubes	414964 or 415129
C47816	15 mL Volumetric Test Tubes for AutoTrace	414964 or 415129
415148	40 mL (28 x 98 mm) IChem/ ASE/EPA Vials	415129
N/A	50 mL Centrifuge Tubes or Greiner	415129

Part Number: 415880-A

© 2017 Biotage. All rights reserved. No material may be reproduced or published without the written permission of Biotage. Information in this document is subject to change without notice and does not represent any commitment from Biotage. E&OE. A list of all trademarks owned by Biotage AB is available at www.biotage.com/legal. Other product and company names mentioned herein may be trademarks or registered trademarks and/or service marks of their respective owners, and are used only for explanation and to the owners' benefit, without intent to infringe.